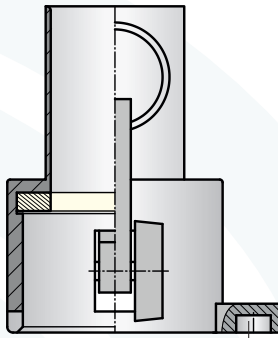


Appliance information

for hose coupling stations of plastics industry

Mother couplings Camlock

with hose nipple (GD), plain and thin-walled

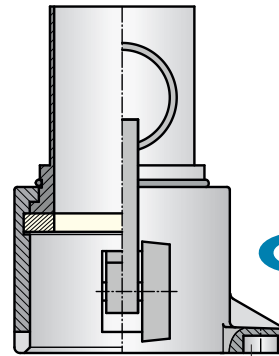


RFID transponder
KC-CT12M6

Order code				
Type	NG	Nipple	W	Pipe
KCT - AMK040 - GD038	VA			38x1.5
KCT - AMK040 - GD040	VA			40x1.5
KCT - AMK050 - GD050	VA			50x1.5
KCT - AMK065 - GD065	VA			65x1.5
KCT - AMK080 - GD080	VA			80x2.0

Mother couplings Camlock

with hose nipple and turnable lever part (DG)



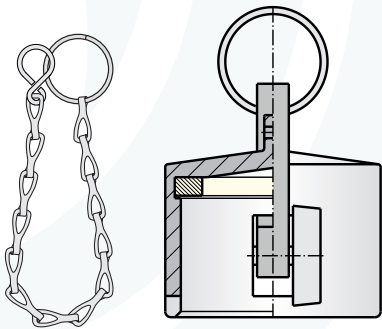
09-603

RFID transponder
KC-CT12M6

Order code				
Type	DN	Nipple	W	Pipe
KCT-AMK040-DG038VA				38x1.5
KCT-AMK040-DG040VA				40x1.5
KCT-AMK050-DG050VA				50x1.5
KCT-AMK065-DG065VA				65x1.5
KCT-AMK080-DG075VA				75x1.5
KCT-AMK080-DG080VA				80x2.0
KCT-AMK100-DG100VA				100x2.0

End cap Camlock

(AMBN) with chain and S-hook without transponder

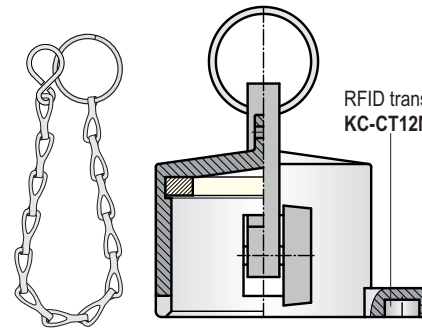


09-1203

Order code		
Type	DN	W
K-AMBN040 AL		
K-AMBN050 AL		
K-AMBN065 AL		
K-AMBN080 AL		
K-AMBN100 AL		

End cap Camlock

(AMB) with chain and S-hook

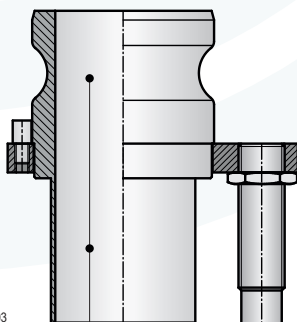


09-1203

Order code		
Type	DN	W
KCT-AMB040AL		
KCT-AMB050AL		
KCT-AMB065AL		
KCT-AMB080AL		
KCT-AMB100AL		

Father couplings Camlock

with pipe connection / hose nipple / welding end (G)



09-603

Inside-Ø acc. to pipe

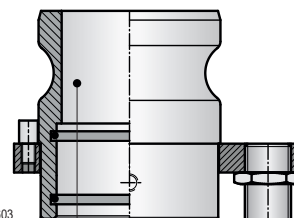
Order code					
Type	DN	Nipple	W	KL	Pipe
KLG-AVK040-G038VA	0				38x1.5
KLG-AVK040-G040VA	0				40x1.5
KLG-AVK050-G050VA	0				50x1.5
KLG-AVK065-G065VA	0				65x1.5
KLG-AVK080-G080VA	0				80x2.0
KLG-AVK100-G100VA	0				100x2.0

RFID reading device
KC-LG16M

DN = Nominal size
W = Material
KL = Cable length

Father couplings Camlock

coupling sleeve connection (M)



09-603

Inside-Ø acc. to pipe

Use only for suction operation mode
Sealing of pipe with O-ring and fixing with 2 grub screws

Order code					
Type	DN	Nipple	W	KL	Pipe
KLG-AVK040-M038VA	0				38x1.5
KLG-AVK040-M040VA	0				40x1.5
KLG-AVK050-M050VA	0				50x1.5
KLG-AVK065-M065VA	0				65x1.5
KLG-AVK080-M080VA	0				80x2.0
KLG-AVK100-M100VA	0				100x2.0

RFID reading device
KC-LG16M

DN = Nominal size
W = Material
KL = Cable length

Notes

The page contains a large grid area for taking notes. The grid is composed of small squares and covers most of the page. On the right side of the grid, there is a large, faint watermark of the Mollet logo, which consists of several concentric, curved lines.