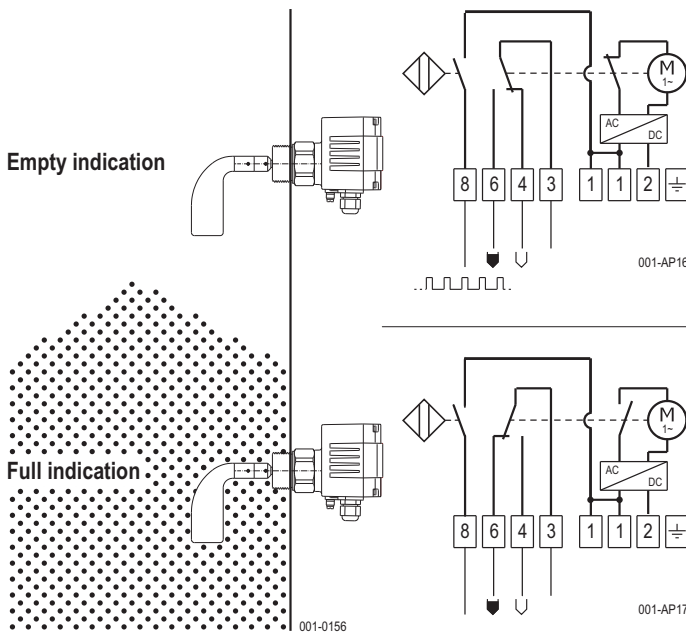


Function control D9 (Rotation control)



The function control option detects device errors early, using a separate independent electronic system. The latter outputs a pulsating signal at terminal 8 while the blade shaft is rotating.

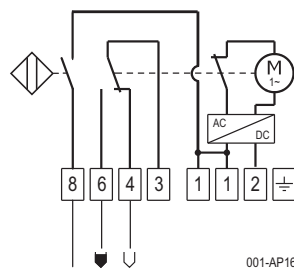
- The following are monitored:
- Cable break**
 - Voltage failure**
 - DC/AC-converter for motor voltage**
 - Motor and transmission**
 - Rotation of the blade shaft**

Please take notice!

If the device signals "full", the motor is switched off (Voltage on terminal 6), the blade shaft stops rotating, and thus for the time of the "full" message no pulsating signal is produced.

**Device is in idle mode.
No defect!!!**

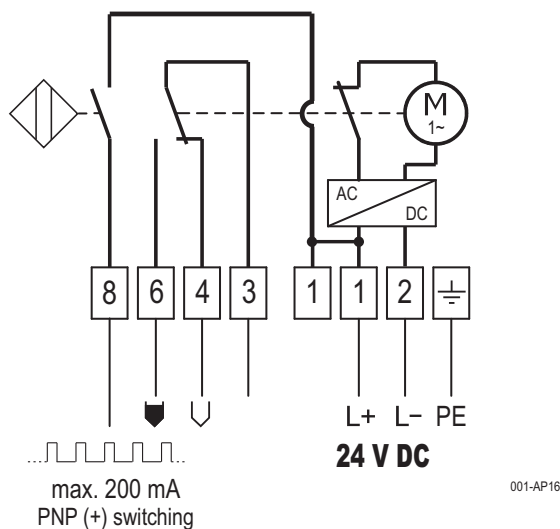
Error signal



Device error displayed

If there is a device error, or if the supply voltage is absent, the pulsation of the signal is interrupted, signalling the error.

Circuit diagram



U1 (Standard = 1 U/min)
Pulse duration ca. 2.5 sec
Pulse pause ca. 17.5 sec
 = 3 Pulse/min

U5 (5 U/min)
Pulse duration ca. 0.5 sec
Pulse pause ca. 3.5 sec
 = 15 Pulse/min

ATTENTION! Level indicator is always to be brought into circuit so that no undesirable switching function can occur in the case of mains voltage failure.